



Beaufort County Public Works Stormwater Infrastructure Project Summary

Project Summary: Ogden Court Outfall

Activity: Drainage Enhancement

Narrative Description of Project:

Project improved 270 L.F. of drainage system. Installed 270 L.F. of channel pipe, strawmat, sod and rip rap for erosion control.

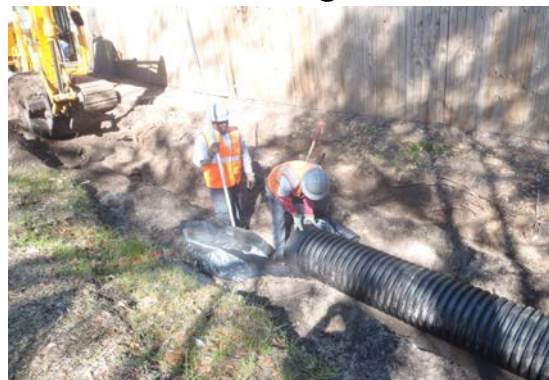
Completion: Feb-13

2013-019 / Ogden Court	Labor Hours	Labor Cost	Equipment Cost	Material Cost	Contractor Cost	Indirect Labor	Total Cost
AUDIT / Audit Project	1.0	\$20.89	\$0.00	\$0.00	\$0.00	\$13.23	\$34.12
HAUL / Hauling	60.0	\$1,311.00	\$642.00	\$2,759.61	\$0.00	\$865.20	\$5,577.81
NONPRO / Non-Professional Services	0.0	\$0.00	\$0.00	\$0.00	\$490.00	\$0.00	\$490.00
OFPI / Outfall Pipe - Installation	120.0	\$2,756.70	\$567.95	\$2,943.30	\$0.00	\$1,795.30	\$8,063.25
ONJV / Onsite Job Visit	11.0	\$406.49	\$48.24	\$40.56	\$0.00	\$335.60	\$830.89
PI / Project Inspection	1.0	\$40.23	\$4.02	\$6.24	\$0.00	\$33.96	\$84.45
PP / Project Preparation	2.0	\$80.46	\$8.04	\$6.24	\$0.00	\$67.92	\$162.66
PRRECON / Project Reconnaissance	4.0	\$117.18	\$16.08	\$26.52	\$0.00	\$88.65	\$248.43
SC / Sediment Control	20.0	\$461.68	\$16.08	\$44.04	\$0.00	\$299.24	\$821.04
SI / Sod - Installation	27.0	\$599.35	\$81.64	\$151.14	\$0.00	\$397.41	\$1,229.54
2013-019 / Ogden Court Sub Total	246.0	\$5,793.98	\$1,384.05	\$5,977.65	\$490.00	\$3,896.51	\$17,542.19
Grand Total	246.0	\$5,793.98	\$1,384.05	\$5,977.65	\$490.00	\$3,896.51	\$17,542.19

Before



During



After



Project: Ogden Court

Activity: Drainage Enhancement




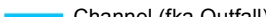








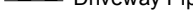

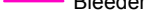
Project #: 2013-019

Township: Lady's Island

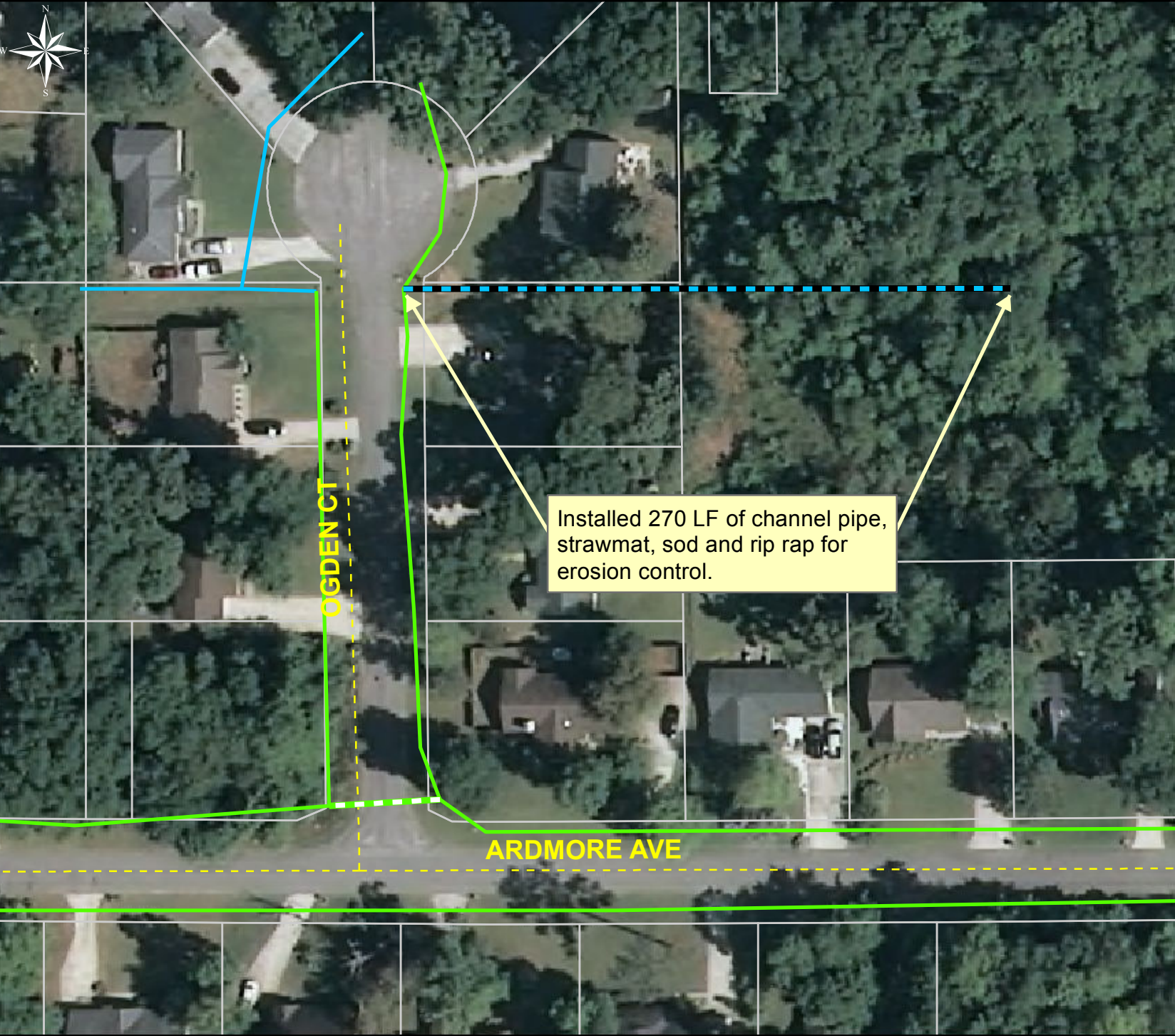
Completed: February 2013

Legend

TYPE

-  River
-  Creek/Stream
-  River/Creek/Marsh BANK
-  Channel (fka Outfall)
-  Channel Pipe
-  Lateral
-  Lateral Pipe
-  Roadside
-  Roadside Pipe
-  Road Pipe
-  Crossline Pipe
-  Driveway Pipe
-  Access Pipe
-  Bleeder Pipe
-  Parcels

Installed 270 LF of channel pipe, strawmat, sod and rip rap for erosion control.



1 inch = 67 feet